

## ADAPTER STYLE

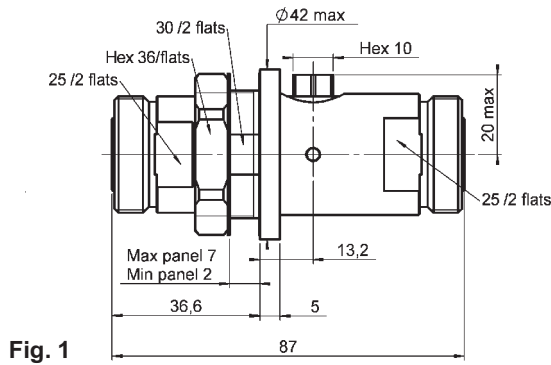


Fig. 1

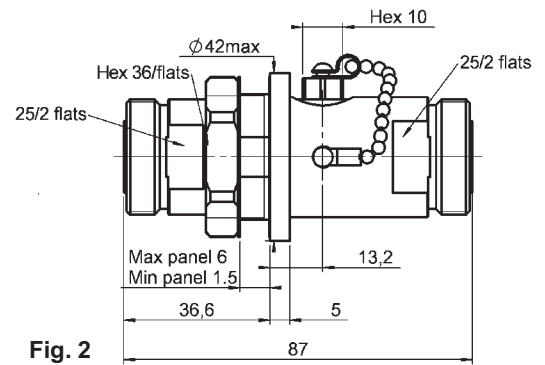


Fig. 2

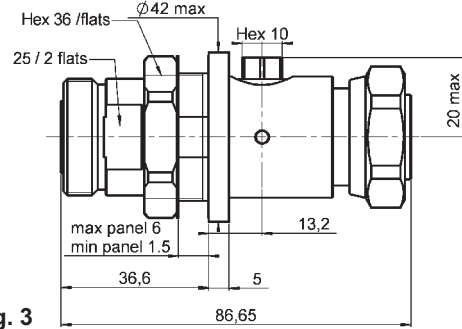


Fig. 3

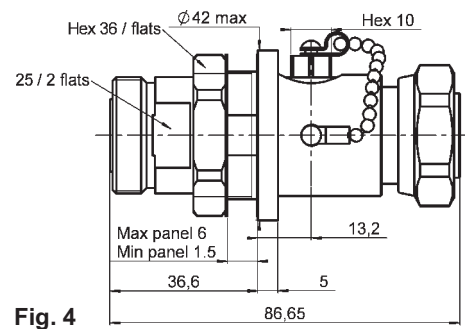


Fig. 4

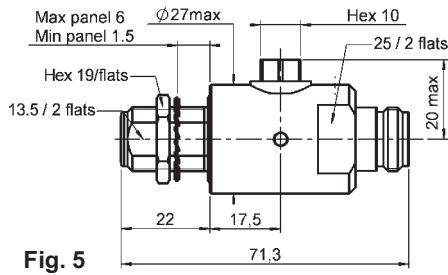


Fig. 5

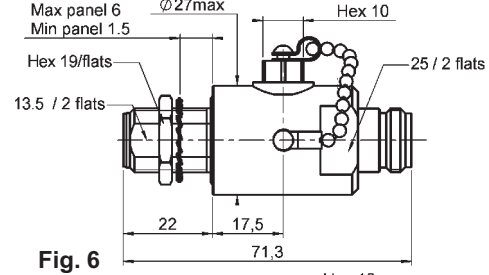


Fig. 6

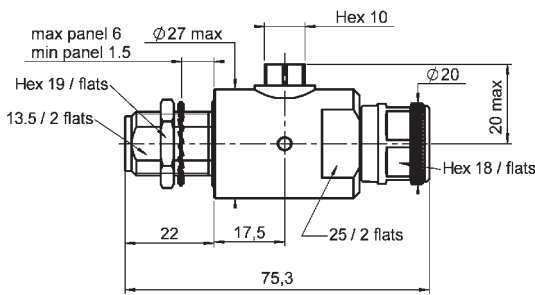


Fig. 7

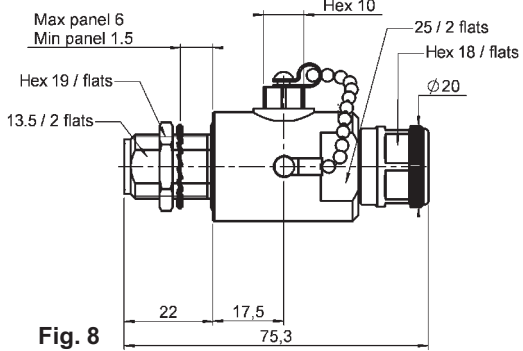


Fig. 8

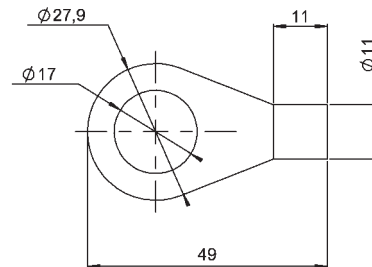
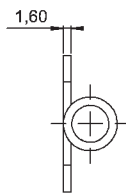
Frequency range (MHz)	Part number	Panel side	Opposite side	fig	cut out	note	finish
DC-2500	R445 G02 000	7/16 female	7/16 female	1	P02	with chain	Silver + BBR*
	R445 G02 001			2			
	R445 G02 100		3				
	R445 G02 101		4				
	R445 G00 000	N female	N female	5	P03	with chain	
	R445 G00 001			6			
	R445 G00 100		N male	7			
	R445 G00 101			8			

## FIELD REPLACEABLE GAS CAPSULES



Part number	DC spark-over voltage (V)	impulse sparkover voltage (V)	impulse discharge current (kA)	glow discharge voltage (V)	Arc voltage (V)	Recommended use
R445 999 100	230 +/- 20%	< 700	10	60	10	power levels at 20 to 110W
R445 999 101	350 +/- 20%	< 1000		75	15	power levels at 100 to 300W
R445 999 102	90 +/- 20%	< 700	20	60	10	transmitter up to 20W or receiver
R445 999 103	230 +/- 20%					power levels at 20 to 110W
R445 999 105	350 +/- 20%	< 1000				power levels at 100 to 300W

## GROUNDING RING (to be used on bulkhead type N interface)



Part number	Finish and material
R445 999 001	tin lead brass